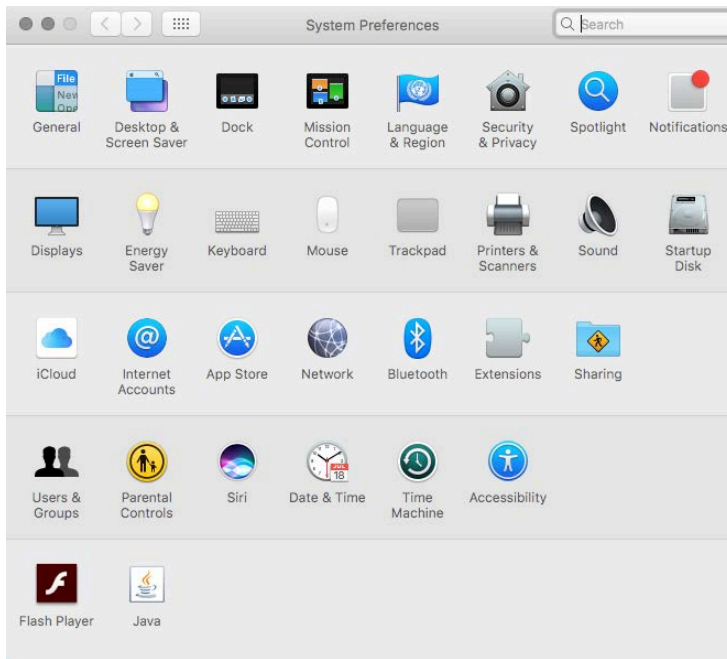


## Connecting to an HSS Printer (MacOS)

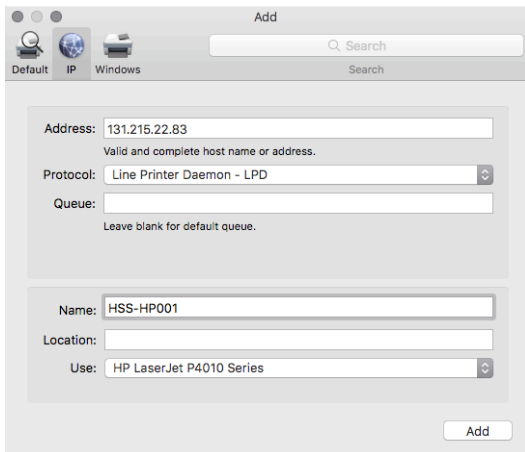
1. Go to **System Preferences** and click on **Printers & Scanners**.



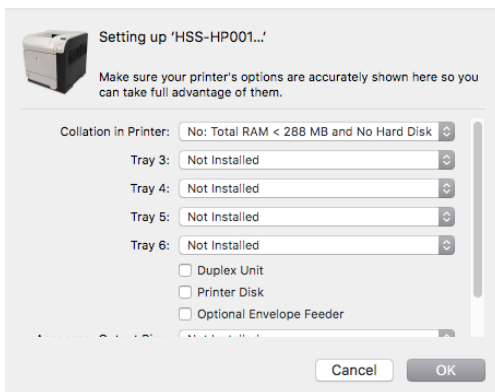
2. On the following screen press the "+" symbol on the bottom left.



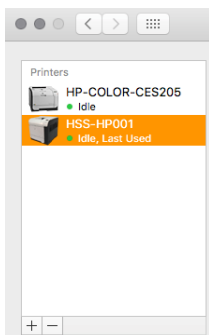
3. On the next click on the **IP** tab
  - a. Type the IP address for the printer you want to connect to in the **Address** field. The IP address is on an IMSS label attached to the printer.
  - b. Select **Line Printer Daemon – LPD** from the **Protocol** menu.
  - c. Type in a name for the printer in the **NAME** field.
  - d. The print driver should be automatically recognized in the **USE** menu. Click **ADD**.



4. You may see a window with additional options appear. Select the options you need and press **OK**.



5. The new printer should now appear in the Printers & Scanners window. Print a test page.



**\*\* If you have any issues please contact the IMSS Help Desk at x3500 or email [help@caltech.edu](mailto:help@caltech.edu)**